

## Can the technology be used to treat or diagnose?

No. ZYTO technology does not diagnose, treat, or cure. It is a tool designed to assist the individual in finding the body's preferences for any list of items. This information is used to make better decisions about personal health, preference for nutritional supplements, foods to avoid, and so on. Even though this information has obvious value, the results of a bio-survey are not diagnostic.

## Do you have FDA approval?

ZYTO's technology has been reviewed by regulatory and legal experts specializing in FDA matters who determined that it is not a medical device and therefore does not qualify for or require FDA registration.

## Are there any research studies on the technology?

Yes, some are specific to ZYTO technology and others relate to its scientific basis: information theory, biology, physics, and computer science. Studies specific to ZYTO technology show a significant correlation between data collected from ZYTO applications and other proven systems for data collection, medical laboratory tests as an example.

## Are the results reproducible?

ZYTO technology measures the most rapidly changing field in the body, the energetic field, which processes 400 million impulses of information per second. When dealing with complex mind-body systems, repeatable measurements are not expected. However, in most instances successive bio-surveys will produce comparative results; each bio-survey will present a picture that is comparative in a meaningful way to the others. Health professionals and others with bio-survey experience learn that results obtained from the first bio-survey are valid and the most accurate.

### FOR MORE INFORMATION:

Susan Pokorny  
Educator and Distributor #1003003  
suepokorny2@hotmail.com  
www.pureHOMEandBODY.com

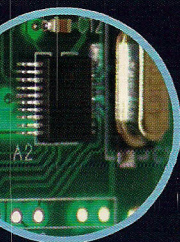
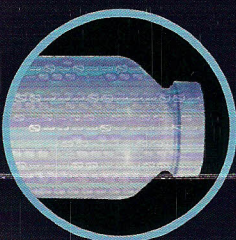
# HOW ZYTO TECHNOLOGY WORKS



# How ZYTO Technology Works

## 1. Digital Signatures

Computer-generated digital signatures representing physical stimuli are sent to the body. These digital stimuli elicit physiological responses from the body, one of which is a change in the conductivity of the skin (GSR). These fluctuations in skin conductivity are measured and sent back to the computer for analysis and interpretation.



## 2. Hand/Cradle Chip

Takes conductivity readings from the skin and converts the analog readings to a digital form which is sent to the computer for analysis.

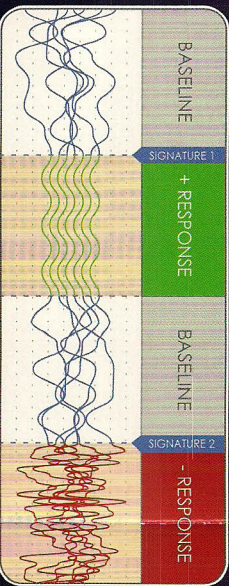


## 3. Galvanic Skin Response

Galvanic Skin Response (GSR) is an established technology that measures fluctuations in electrical conductivity of the skin as the body responds to various stimuli. One application of GSR that many people are familiar with is lie-detect or 'testing'.

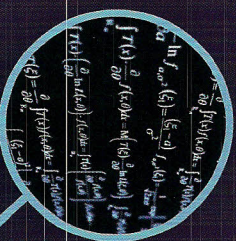
## 4. Coherence Patterns

Coherence is a state where two or more things exist without conflict. By hooking multiple inputs, ZYTO Technology can calculate shifts in coherence as the body responds to each digital signature. Signatures that create greater coherence from the baseline are given a positive score and signatures creating less coherence from the baseline are given a negative score.



## 5. Proprietary Software

The data received from the hand cradle is plotted and analyzed for coherence. Each response is given a positive or negative score called a Deviation Ratio (DR).



## 6. Prioritized Results

After analyzing the data from the hand cradle, the computer displays the data in an easy-to-read graphical interface. The data shows the body's responses ranked in order of priority. Results are prioritized and there is used more effectively by focusing on the body's priorities.

Digital Signature	DR
Ginseng Capsule	+54.34
St. Johns Wort	+48.12
CoQ10	+37.19
CalMag Table	+18.02
Zinc	-33